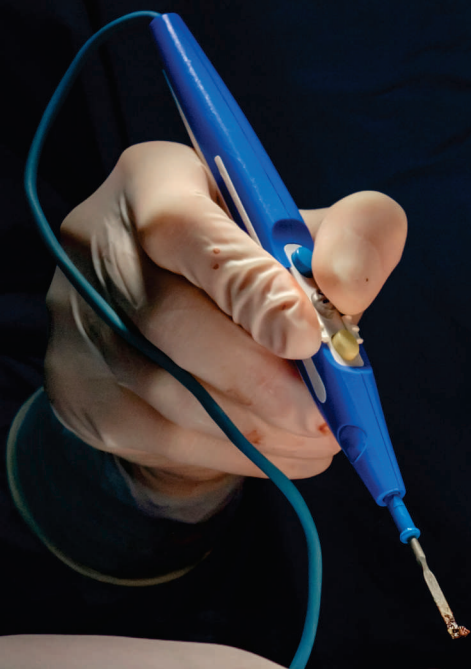


bluESU™



**ELECTROSURGICAL
NEUTRAL ELECTRODE
(PATIENT RETURN ELECTRODE)**



MEDICO ELECTRODES

MedicoElectrodes.com

Electrosurgery

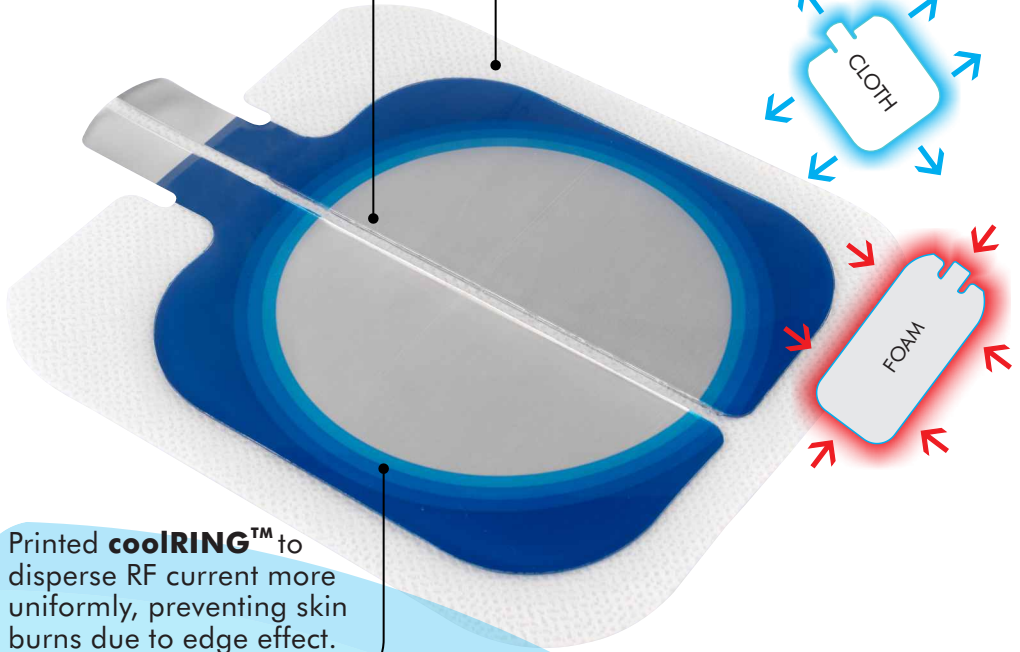
Electrosurgery involves the use of alternating current (AC). The current enters the body and returns by the easiest route, normally by a grounding plate. In electrosurgery, the electrosurgical generator provides the source of voltage and current flow. To complete the circuit a grounding plate (also known as a neutral, return or dispersive plate), an active electrode and the patient effectively combine to complete the circuit. The grounding plate is simply used to complete the electrical circuit. Obviously, one does not want to burn the patient at this second, non-treatment site. The area of this electrode is therefore made very large (compared to the active electrode) so that the current that flows through a large area of skin does not meet too much resistance, and does not result in a significant increase in temperature. Because this electrode has to be very large and must make good contact with the skin, it must be placed over a large area of skin on a 'smooth' body site.



Ultra-low Impedance

proprietary hydrogel provides an exceptional pad-to-skin contact for a cooler and safe procedure.

Trans-thermal Cloth backing material prevents heat entrapment and keeps unwanted surgical fluids out, thanks to its non-woven laminate and a layer of polyethylene.

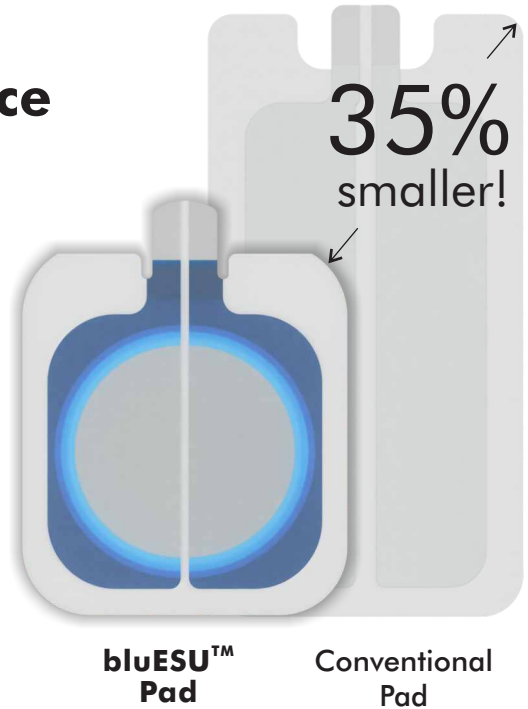


Printed **coolRING™** to disperse RF current more uniformly, preventing skin burns due to edge effect.

bluESU™

Convenient to place

Embrace the versatility of the smaller **bluESU™**, which can be positioned in various orientations and accommodates a wider range of suitable placement sites on the patient.



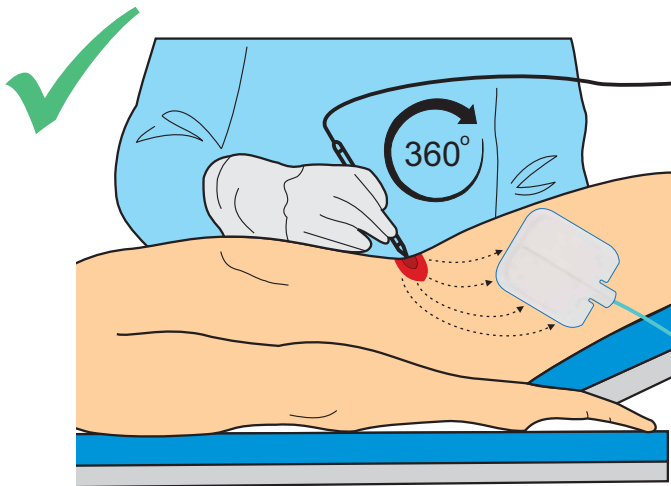
Conventional ESU pads are difficult to place on patients who are :

- Small in size and weight
- Emaciated
- Elderly
- With limited muscle tissue
- Afflicted with a skin malady
- Suffering from burns over a significant percentage of the body

Availability of sites for the placement of all ESU pads is reduced by the presence of :

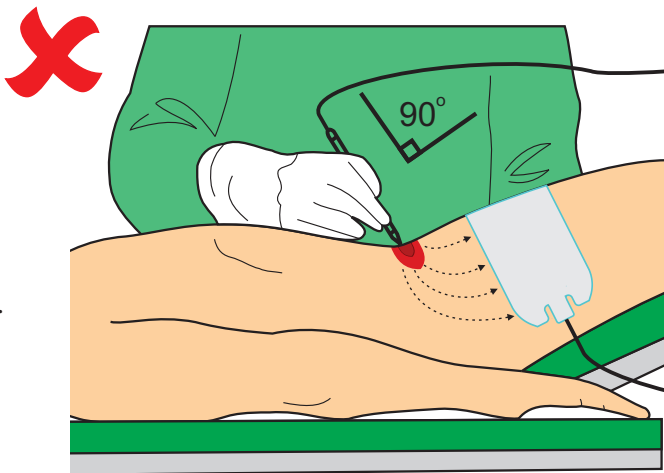
- Scar Tissue
- Bony prominences
- Implants
- Pacemakers
- Weight bearing areas

Furthermore, at times some procedures require multiple surgical sites, further reducing available area for application of ESU pads.



bluESU™ Pad is designed for universal placement thereby removing placement challenges and negating user errors.

Conventional ESU Pads need to be placed perpendicular to surgical site to prevent leading clusters of current thus making orientation critical.

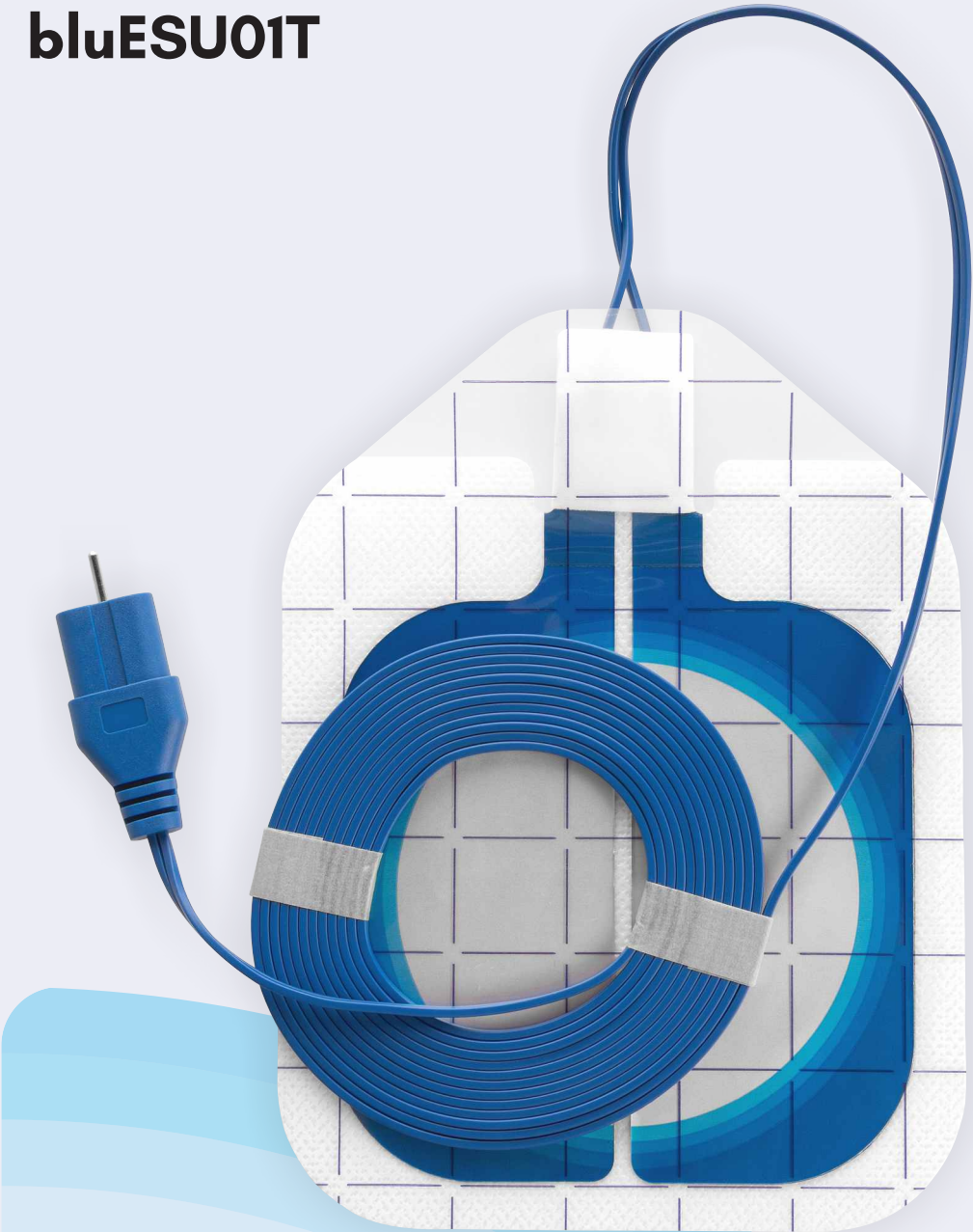


bluESU™

bluESU01B



bluESU01T



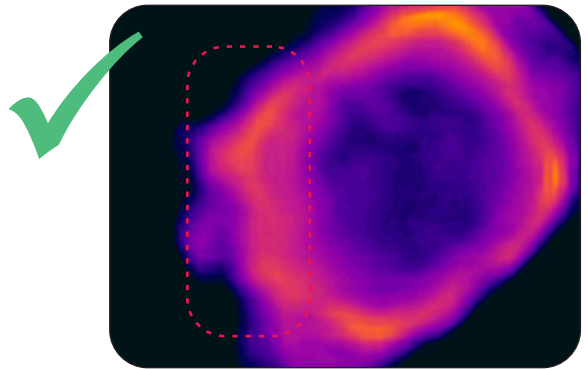
coolRING™ in Action!

Printed **coolRING™** to disperse RF current more uniformly, preventing skin burns due to edge effect.

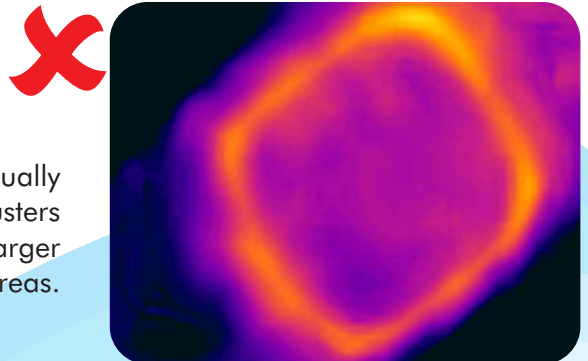
Temperature gradient provides **cooler** performance!

Safe thermal performance: the universal pad demonstrates a maximum temperature rise similar to traditional pads up to 35% larger and meets the temperature rise criteria (as per IEC 60601-1 & 60601-2-2)

bluESU™ Pad



Conventional Pad



Conventional Pads fail to equally distribute current, developing clusters of heat, thus requiring larger surface areas.

bluESU™

airTAB for quick & easy removal.



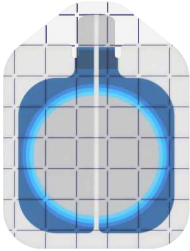
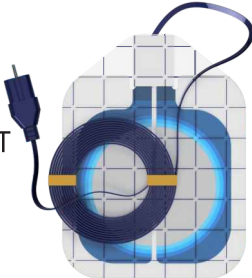
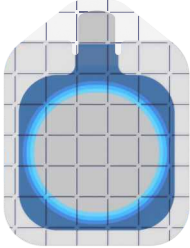
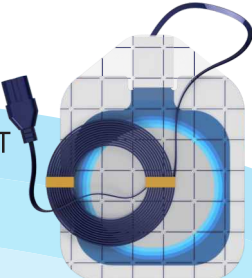
A cost-effective, universal solution

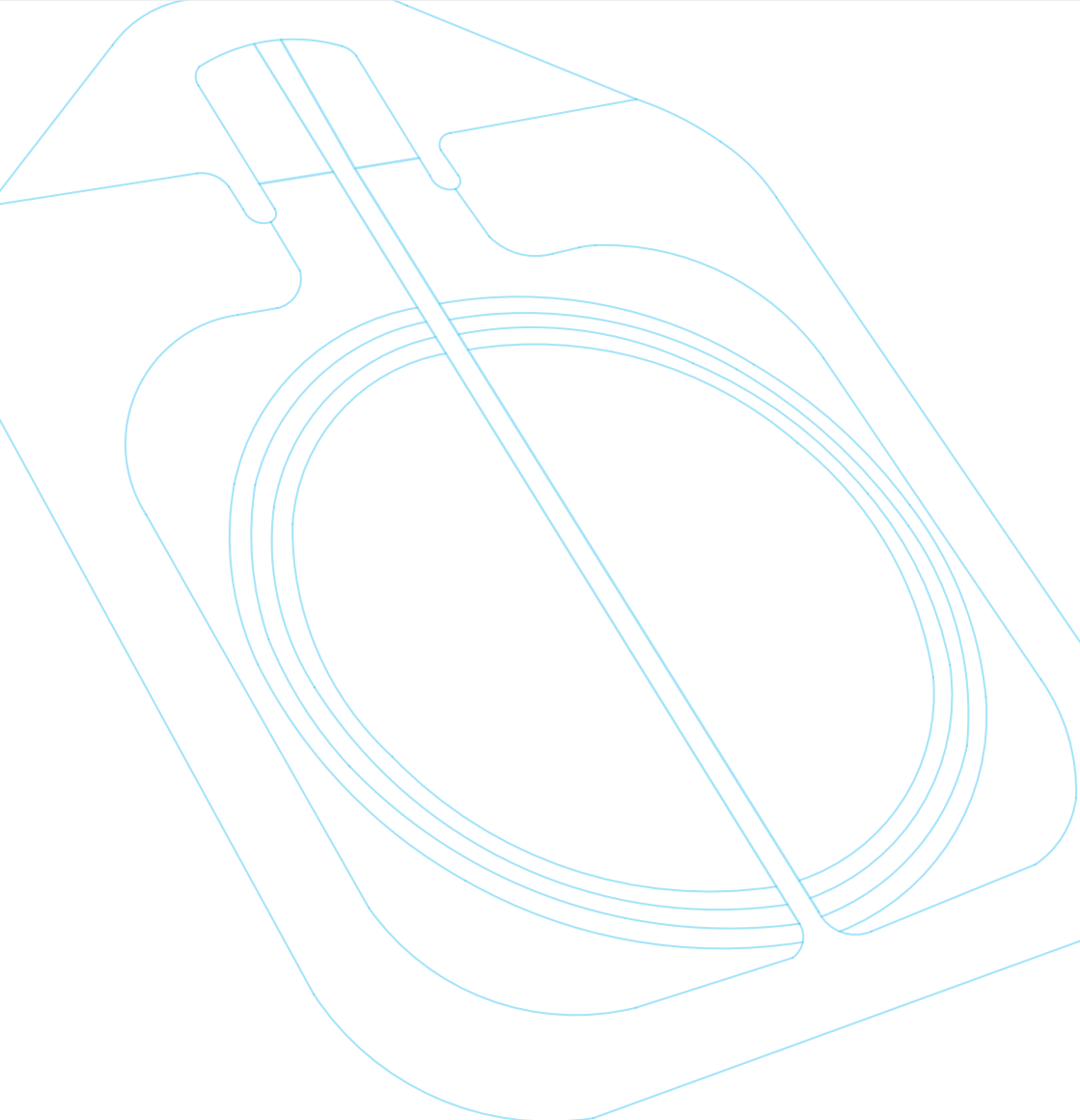
- Smaller size and universal orientation - can be used for both adults and pediatric thereby reducing inventory cost.
- Compatible with all major brands of generators.
- Two year shelf life.

bluESU™

Type	Disposable, single use, non-sterile ESU plate	
Versions	Non-Split & Non- Split Wired, Split & Split Wired (CQM compatible REM Connector)	
Biocompatibility	ISO 10993-1 for all skin contact materials	
Performance	Temperature rise of less than 5°C (as per IEC 60601-1 & IEC 60601-2-2)	
Backing Material	Fluid resistant non-woven and trans-thermal cloth	
Total Adhesive Area	154 cm ²	
Conductive Area	98 cm ²	
Storage Temperature	+5°C to +30°C	
Shelf Life	24 Months	
Cable length (Wired version)	3 meters or 5 meters	
Size	153 x 120 mm	
Patient Population	✓	5-15kg
	✓	>15kg

Packaging :

Reference	Pads per Pouch	Pads per Inner Carton	Pads per Outer Carton
bluESU01B	 1	100	400
	5	100	400
bluESU01T	 1	50	200
bluESU02B	 1	100	400
	5	100	400
bluESU02T	 1	50	200



MEDICO ELECTRODES

MEDICO ELECTRODES INTERNATIONAL LIMITED

Works: 142A/11 & 12, Noida Special Economic Zone, Noida 201305, India
Sales@MedicoElectrodes.com | www.MedicoElectrodes.com

CE
0297



270625V0